

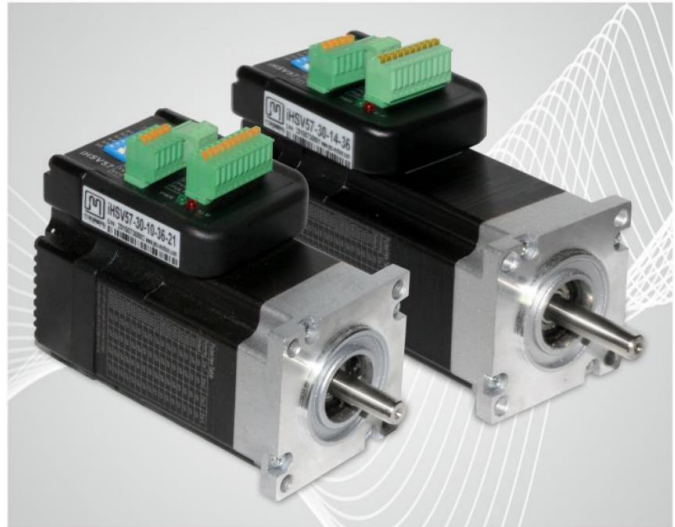
Integrated servo motor

Model Designation:

iHSV 57-30-10-24-XXX

1 2 3 4 5 6

- 1.Integrated Servo Motor
- 2.Frame size 57mm/60mm, Nema 23/24
- 3.Motor Speed(unit:x100RPM)
10 is 1000RPM, 20 is 2000RPM, 30 is 3000RPM
- 4.Output Wattage(unit:x10W)
10 is 100W, 20 is 200W
- 5.Rated DC Working Voltage(unit:V)
24 is 24VDC, 36V is 36VDC.
- 6.Input Control Mode
Blank is Pulse+Signal; R is RS485, RC is RS485 + CAN, EC is EtherCAT



Main Features:

- High positioning accuracy
- High speed
- High torque
- Smooth and low noise
- Multi-model control
- High Response
- Cost-effective
- Compact size

IHSV series of servo motors perfectly integrated into servo control products to create a revolutionary movement with a new and high performance integrated control terminal.

Switch settings:

IHSV series is step & direction control, by 6-digit toggle switch to set microsteps, Positive / negative direction,and effective signal.detailed information as following:

| Pluse/rev | SW1 | SW2 | SW3 | SW4 | Pluse/rev | SW1 | SW2 | SW3 | SW4 |
|-----------|-----|-----|-----|-----|-----------|-----|-----|-----|-----|
| Default | On | On | On | On | 1000 | On | On | On | Off |
| 800 | Off | On | On | On | 2000 | Off | On | On | Off |
| 1600 | On | Off | On | On | 4000 | On | Off | On | Off |
| 3200 | Off | Off | On | On | 5000 | Off | Off | On | Off |
| 6400 | On | On | Off | On | 8000 | On | On | Off | Off |
| 12800 | Off | On | Off | On | 10000 | Off | On | Off | Off |
| 25600 | On | Off | Off | On | 20000 | On | Off | Off | Off |
| 51200 | Off | Off | Off | On | 40000 | Off | Off | Off | Off |

Sw5 set motor run direction,when show OFF,the motor is counterclockwise rotation (CCW.) When show on,The motoris clockwiss rotation (CW)SW6 seting effective pulse.

- **Encoder:** incremental encoder, 1000 lines (ppr), resolution 1/4000.

● IHSV42-40-05-24

Integrated servo motor

Rated Voltage: 24V

Rated Power: 52W

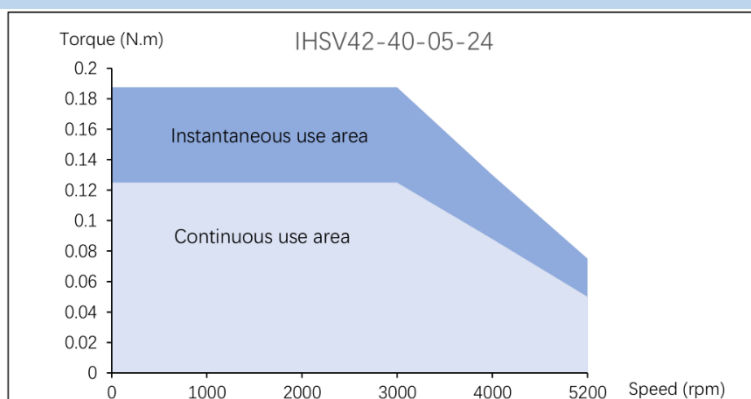
Rated Torque: 0.125Nm



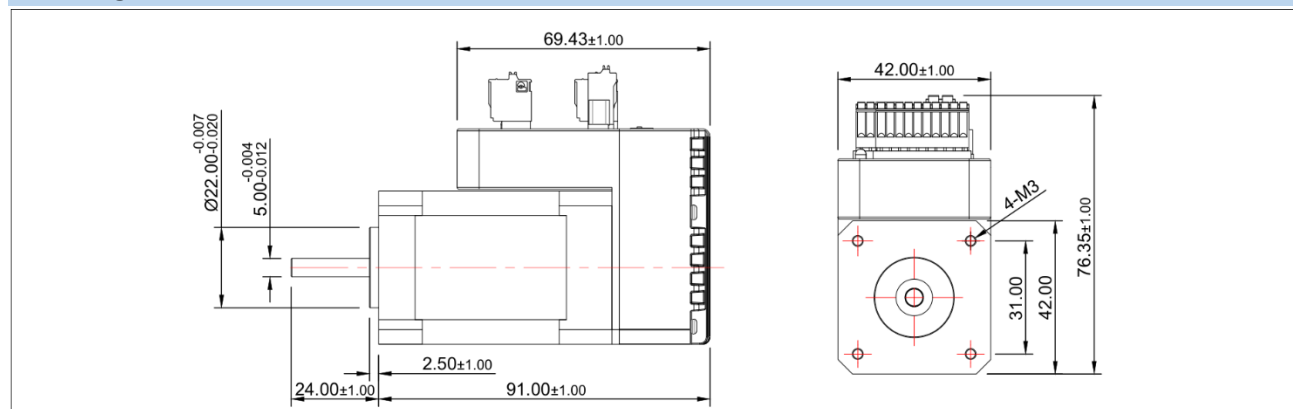
Specifications:

| | | | |
|-------------------------------------|------|--|-------|
| Number of Phase | 3 | Line-line Resistance: $\Omega \pm 10\%$ | |
| Rated Voltage: V | 24 | Line-line Inductance: $\text{mH} \pm 20\%$ | |
| Rated Power: W | 52 | Rated Torque: Nm | 0.125 |
| Rated Speed: $\text{rpm} \pm 7\%$ | 3000 | Torque Coefficient: Nm/A | 0.044 |
| No-load Speed: $\text{rpm} \pm 7\%$ | 5200 | Back EMF constant: V/krpm | 3.26 |
| Rated Current: $\text{A} \pm 20\%$ | 3.4 | Rotor Inertia: $\text{kg} \cdot \text{mm}^2$ | 9.5 |
| No-load Current: A | 0.45 | Insulation Class (UL) | B |

Torque characteristics:



Drawing:



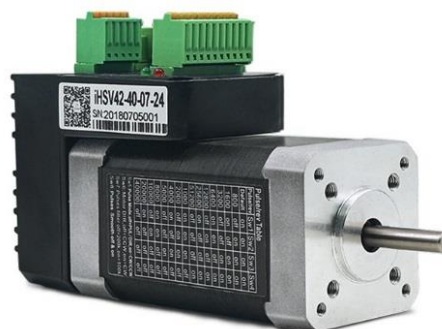
● IHSV42-40-07-24

Integrated servo motor

Rated Voltage: 24V

Rated Power: 78W

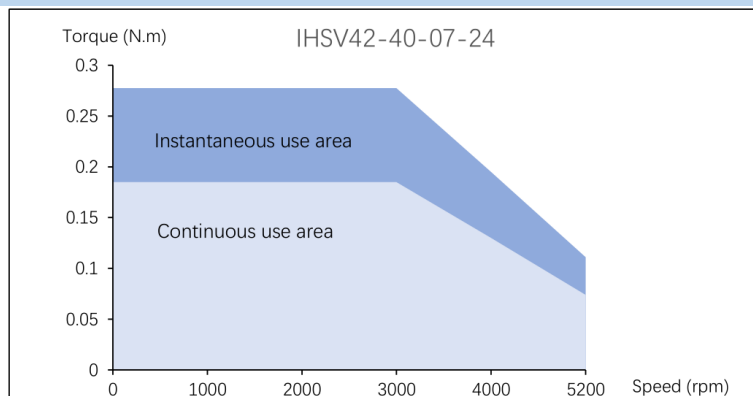
Rated Torque: 0.185Nm



Specifications:

| | | | |
|-------------------------------------|------|--|-------|
| Number of Phase | 3 | Line-line Resistance: $\Omega \pm 10\%$ | |
| Rated Voltage: V | 24 | Line-line Inductance: $\text{mH} \pm 20\%$ | |
| Rated Power: W | 78 | Rated Torque: Nm | 0.185 |
| Rated Speed: $\text{rpm} \pm 7\%$ | 3000 | Torque Coefficient: Nm/A | 0.044 |
| No-load Speed: $\text{rpm} \pm 7\%$ | 5200 | Back EMF constant: V/krpm | 3.26 |
| Rated Current: $\text{A} \pm 20\%$ | 5.1 | Rotor Inertia: $\text{kg} \cdot \text{mm}^2$ | 14.7 |
| No-load Current: A | 0.6 | Insulation Class (UL) | B |

Torque characteristics:



Drawing:

